



M CON Products
2150 Richardson Side Road
Ottawa, ON, K0A 1L0, Canada
t. + 1 800 267 5515
e. sales@mconproducts.com



TABLE OF CONTENTS

SECTION 9 STONE STRONG SYSTEMS®

Stone Strong System	103
Stone Strong System Patterns	106
Stone Strong System Blocks	107
Inside Corner Block Outside Corner Block.	111



THE BIG EASY.

We're the first to agree: bigger is better. But we don't stop there. The biggest and most innovative precast block in the industry is also the easiest to work with. Stone Strong Systems' fully and intelligently engineered block technology allows for a lighter, interlocking block that greatly reduces installation time and labor costs — with unmatched safety, durability and aesthetics. It's big. It's easy. It's Stone Strong.



ROADWAY

Big-time projects demand big-time blocks – Stone Strong Systems' gravity walls are capable of heights in excess of 20 feet. Meanwhile, with proper engineering and reinforcement, Stone Strong MSE walls have topped nearly 50 feet.



COMMERCIAL

Big-time projects demand big-time blocks – Stone Strong Systems' gravity walls are capable of heights in excess of 20 feet. Meanwhile, with proper engineering and reinforcement, Stone Strong MSE walls have topped nearly 50 feet.



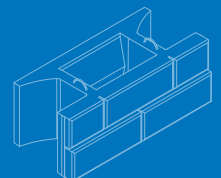
RESIDENTIAL

Make impossibly hard projects impossibly easy – Stone Strong Systems' tapered block edges provide the versatility needed to contour to any landscape, including straight, convex, concave and circular designs.

Stone Strong System

Notes

1. Contact the M CON engineering department for further information.



NOT JUST BIGGER. BETTER.

What is it that makes Stone Strong Systems the best block in precast? In a word — everything. Everyone knows we're the biggest block in the industry. But what they may not know is that we're the industry's most efficient retaining wall system as well. Or that our big block system is the first to be fully engineered both structurally and geotechnically. So no matter what you're looking for — size, speed or strength — Stone Strong Systems can meet your project requirements.



LIGHTER

Our system's unique hollow cavity means less weight per square foot, which translates into reduced transportation costs and a much faster, easier and less costly installation — install up to 1,200 square feet of block a day.



BIGGER

Huge 24-square-foot block dramatically reduces labor costs and installation time, while its sheer size and weight deliver structural strength without any need for tie-backs or additional mechanics.



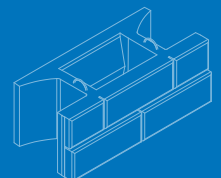
INTERLOCKING

Lift/alignment loops ensure blocks interlock precisely and align units for consecutive level courses. Stone infill securely locks blocks together without any mechanical assistance.

Stone Strong System

Notes

1. Contact the M CON engineering department for further information.





DRAINAGE

Innovative hollow design makes Stone Strong the only wall system in the industry to feature a fully integrated drainage system requiring no additional parts or labor.

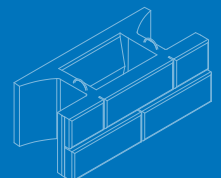
THE BUILDING BLOCKS OF INNOVATION.

Comprised of more than a dozen fully engineered blocks, components and accessories, Stone Strong Systems combines the flexibility to accommodate any retaining wall project — large or small — with unmatched safety, durability and aesthetics. Every block is manufactured to product specifications to assure uniform weight, dimensional tolerance and strength, and unlike other brands, returned concrete is never used for Stone Strong blocks. Not to mention, every block is produced with air-entrained 4,000-psi concrete to protect it through even the most strenuous freeze/thaw cycles.

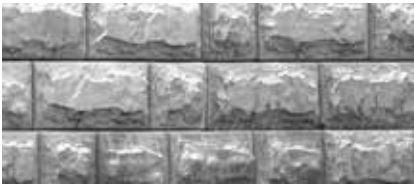
Stone Strong System

Notes

1. Contact the M CON engineering department for further information.



EVERY STONE STRONG BLOCK FEATURES A REALISTIC, CHISELED-STONE FAÇADE HANDCRAFTED BY REAL ARTISANS.



CHISELED GRANITE (Standard)

Derived from blocks hand-chiseled by artisans, the pattern is intended to match the classic look of natural, chiseled stone.



FRACTURED LEDGE (Special Order)

Created from actual fractured ledge stone, the highly defined pattern offers the most natural look.



POTOMAC (Special Order)

Smooth and broken up, this pattern was produced to replicate actual original cobblestone from the East Coast.



TENNESSEE FOOTHILLS (Special Order)

Sharp and well defined, the pattern was developed by laser-mapping actual retaining walls in the Smoky Mountains.

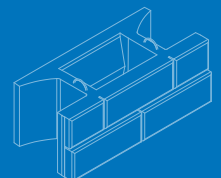


FLAT FACE (Special Order)

Stone Strong System Patterns

Notes

1. Contact the M CON engineering department for available patterns and colours.





M CON PRODUCTS

M CON Products

2150 Richardson Side Road
Ottawa, ON, K0A 1L0, Canada
t. + 1 800 267 5515
e. sales@mconproducts.com



3-28 BLOCK
Face 2' X 18" x 28"

The 3 SF Block can be used on smaller walls where site depth is a factor. Weight 225 kilograms.



3-28 TOP BLOCK
Face 2' X 18" x 28"

The 3 SF Top Block can be used on smaller walls and easy to move around on-site with a skid loader or mini-excavator. Weight 200 kilograms.



3 SF BLOCK
Face 2' X 18" x 44"

The 3 SF Block allows the wall to stay on a running bond. This block is also available as a vertical. Weight 364 kilograms.



3 SF TOP BLOCK
Face 2' X 18" x 44"

Every Stone Strong block is manufactured to particular specifications to assure uniform weight, dimensional tolerance and strength. Weight 328 kilograms.



6-28 BLOCK
Face 4' X 18" X 28"

Stone Strong's tapered block edges provide the versatility needed to contour to any landscape. Weight 430 kilograms.



6-28 TOP BLOCK
Face 4' X 18" X 28"

Unlike other brands, returned concrete is never used for Stone Strong blocks. Weight 380 kilograms.



6 SF BLOCK
Face 4' X 18" X 44"

The 6 SF Block allows for tighter turning radii. This block is also available as a vertical. Weight 680 kilograms.



6 SF TOP BLOCK
Face 4' X 18" X 44"

Blocks interlock securely and precisely without any mechanical assistance. Weight 635 kilograms.



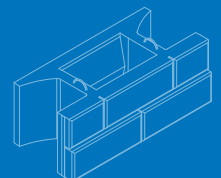
12 SF BLOCK
Face 8' X 18" X 44"

The 12 SF Block allows for quicker installation of 1.5 foot high courses. Weight 1360 kilograms.

Stone Strong System Blocks

Notes

1. Contact the M CON engineering department for further information.





M CON PRODUCTS

M CON Products
2150 Richardson Side Road
Ottawa, ON, K0A 1L0, Canada
t. + 1 800 267 5515
e. sales@mconproducts.com



12 SF TOP BLOCK
Face 8' X 18" X 44"

Stone Strong's sheer mass holds the system together without the need for geogrid or soil reinforcement. Weight 1300 kilograms



24 SF BLOCK
Face 8' X 36" X 44"

This 24 SF Block is the Standard Stone Strong block. This block is also available as a vertical. Weight 2722 kilograms.



24 SF TOP BLOCK
Face 8' X 36" X 44"

The Top Block has an 8" recess at the top of the face to allow for multiple finish options. Weight 2449 kilograms.



24-62 BLOCK
Face 8' X 36" X 62"

The 24-62 Block builds walls up to 18' with no tie-back. This block is also available as a vertical. Weight 3109 kilograms.



24-86 BLOCK
Face 8' X 36" X 86"

The 24-86 Block builds walls up to 22.5' with no tie-back. This block is also available as a vertical. Weight 3489 kilograms.



24 SF MASS EXTENDER BLOCK
Face 8' X 36" X 56"

The addition of the extender to the 24 SF block provides for greater gravity wall heights. This block is also available as a vertical. Weight 4526 kilograms.



45 DEGREE BLOCK
Face 4' x 1.5' x 4'

The 45° Block provides for inside and outside 45° turns. Weight 910 kilograms.



45 DEGREE INSIDE CORNER TOP
Face 4' x 1.5' x 4'

The 45° Inside Corner Block provides for corners where the low grading is on the inside of the corner. Weight 757 kilograms.



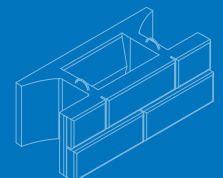
45 DEGREE OUTSIDE CORNER TOP
Face 4' x 1.5' x 4'

The 45° Outside Corner Block provides for corners where the low grading is on the outside of the corner. Weight 837 kilograms.

Stone Strong System Blocks

Notes

1. Contact the M CON engineering department for further information.





M CON PRODUCTS

M CON Products
 2150 Richardson Side Road
 Ottawa, ON, K0A 1L0, Canada
 t. + 1 800 267 5515
 e. sales@mconproducts.com



COLUMN 'T' BLOCK
Face 4' X 48" X 18"

90° Block with 1 finished side.
 Weight 1179 kilograms.



COLUMN 'T' TOP BLOCK
Face 4' X 48" X 18"

90° Top Block with 1 finished side.
 Weight 1179 kilograms..



90 DEGREE BLOCK
Face 48" X 48" X 18"

90° Block provides for inside and outside
 90° turns.
 Weight 1179 kilograms.



90 DEGREE CORNER TOP
Face 48" X 48" X 18"

90° Corner Top Block can be used for
 inside and outside 90° turns.
 Weight 1042 kilograms.



COLUMN END BLOCK
Face 48" X 48" X 48" X 18"

90° Block with 3 finished sides.
 Weight 1179 kilograms.



4' DUAL BLOCK
Face 4' X 18" X 28"

The 4' Dual Face Block provides for
 above-grade applications.
 Weight 800 kilograms.



8' DUAL BLOCK
Face 8' X 18" X 28"

The 8' Dual Face Block provides for
 above-grade applications.
 Weight 1597 kilograms.



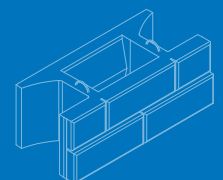
END CORNER BLOCK
Face 4' X 18" X 24"

The End Corner block is used for 90° turns
 and for end finish treatments.
 Weight 640 kilograms.

Stone Strong
 System Blocks

Notes

1. Contact the M CON engineering department for further information.





45 DEGREE COLUMN CAP



90 DEGREE COLUMN CAP



4' END CAP



4' STEP CAP



8' STEP CAP



8' DUAL END CAP



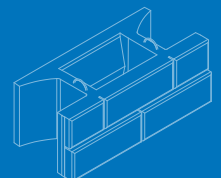
8' END CAP

Column Cap Chart					
	End Finishing	Face Length	Height	Depth	Block Weight (kg)
4' End Cap Block	1 Finished End	4'	0.58	2.67'	405
4' Cap/Step Block	2 Flush Ends	4'	0.58	2.67'	405
8' End Cap Block	1 Finished End	8'	0.58	2.67'	726
8' Dual End Cap Block	2 Finished Ends	8'	0.58	2.67'	726
8' Cap/Step Block	2 Flush Ends	8'	0.58	2.67'	726
8' End Cap Block	1 Finished End	8'	0.58	2.67'	726

Stone Strong System Blocks

Notes

1. Caps with two flush ends can also be used for stairs and step applications.
2. Clamp required for installation.
3. Contact the M CON engineering department for further information.





90 DEGREE INSIDE CORNER UNIT #1

Block Number	Length	A	B	C	Block Weight
1	65 in 1646 mm	25 in 641 mm	25 in 633 mm	19 in 485 mm	2070 lbs 940 kg
2	70 in 1790 mm	31 in 784 mm	31 in 777 mm	23 in 593 mm	2350 lbs 1065 kg
3	76 in 1934 mm	37 in 928 mm	36 in 921 mm	27 in 694 mm	2630 lbs 1195 kg
4	82 in 2077 mm	42 in 1072 mm	42 in 1064 mm	31 in 796 mm	2900 lbs 1315 kg
5	87 in 2221 mm	48 in 1215 mm	48 in 1208 mm	35 in 896 mm	3180 lbs 1445 kg
6	93 in 2365 mm	54 in 1359 mm	53 in 1352 mm	39 in 997 mm	3460 lbs 1570 kg



90 DEGREE OUTSIDE CORNER UNIT #1

Block Number	Length	A	B	C	Block Weight
1	65 in 1652 mm	42 in 1054 mm	48 in 1221 mm	44 in 1124 mm	2600 lbs 1180 kg
2	59 in 1508 mm	36 in 910 mm	42 in 1077 mm	40 in 1022 mm	2330 lbs 1055 kg
3	56 in 1415 mm	30 in 767 mm	37 in 933 mm	36 in 920 mm	2050 lbs 930 kg
4	48 in 1221 mm	25 in 623 mm	31 in 790 mm	32 in 819 mm	1770 lbs 805 kg
5	42 in 1077 mm	19 in 479 mm	25 in 646 mm	28 in 717 mm	1500 lbs 680 kg
6	37 in 933 mm	13 in 336 mm	20 in 502 mm	24 in 616 mm	1220 lbs 555 kg

Inside Corner Block
Outside Corner Block

