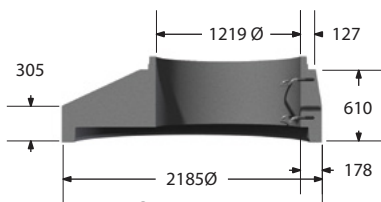
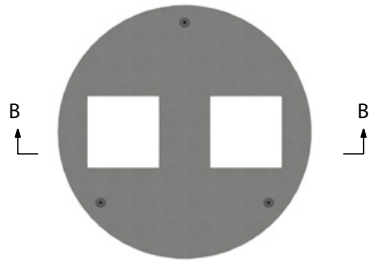




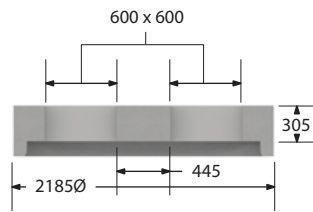
Plan



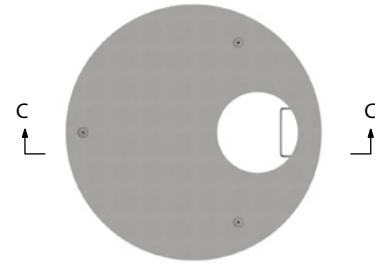
Section A-A



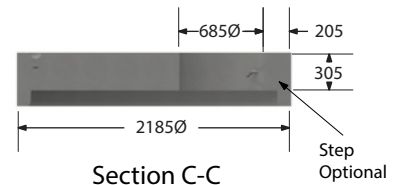
Plan



Section B-B



Plan



Section C-C



**Transition**  
(mass - 2570 kg)



**Twin Inlet Flat Cap**  
(mass - 2430 kg)



**Flap Cap**  
(mass - 2704 kg)

# Maintenance Hole 1800mm Transition and Top Sections

**Notes**

1. Manufactured in accordance with OPSD 701.050, 703.012 and 703.022 .
2. Maintenance hole steps (circular hollow aluminum) as per OPSD 405.010.
3. All dimensions are in millimeters unless otherwise shown.

